

# DOCUMENT 5.10.1.7

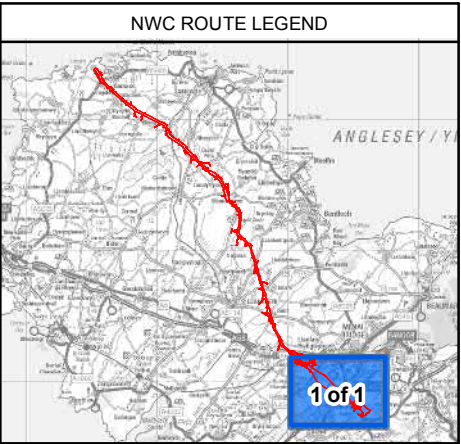
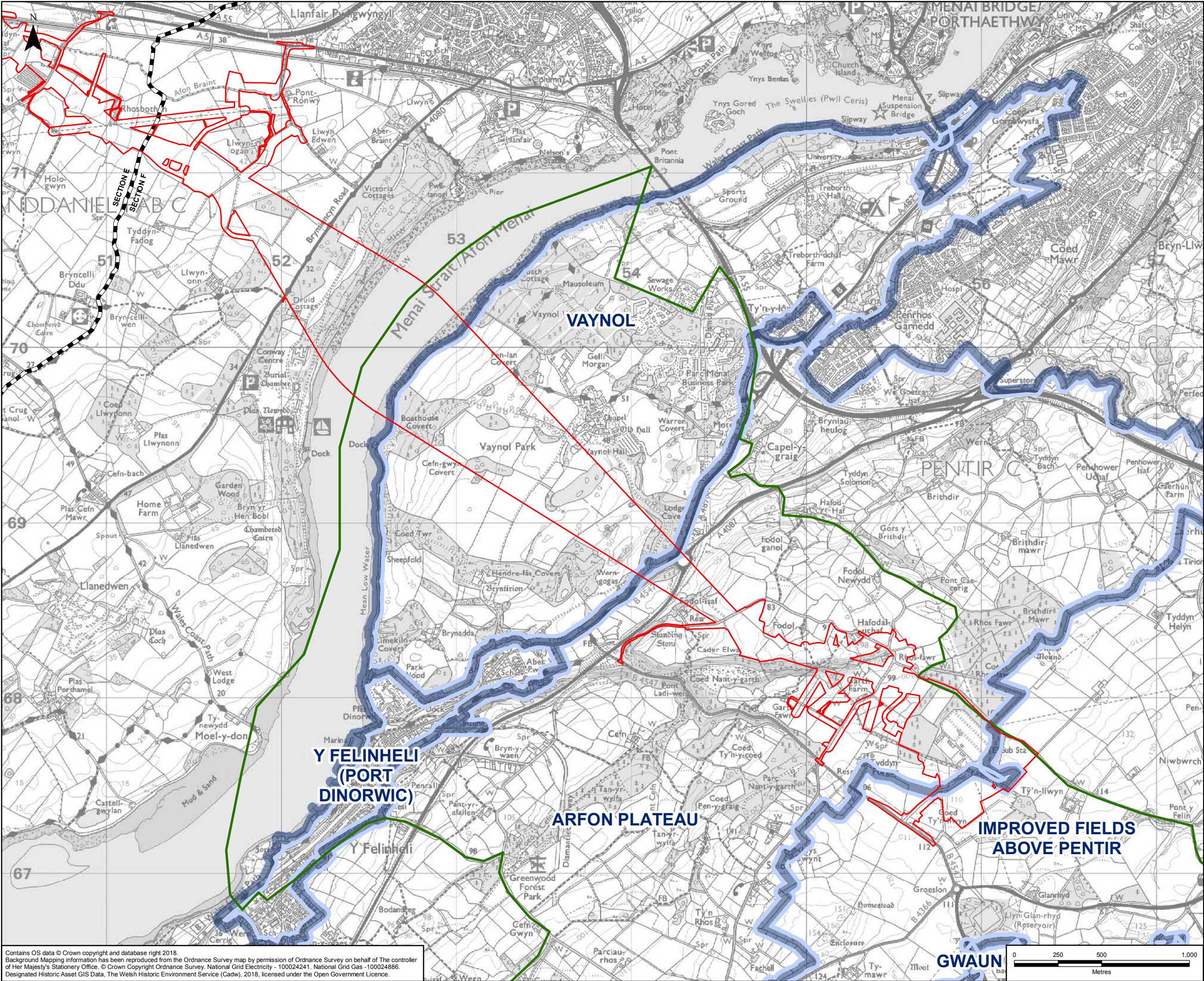
## Dinorwig Landscape of Outstanding Historical Interest Chapter 10 – Figure 7

National Grid (North Wales Connection Project)

*Regulation 5(2)(a) including (l) and (m) of the Infrastructure Planning  
(Applications: Prescribed Forms and Procedure) Regulations 2009*







- LEGEND**
- ORDER LIMITS
  - SECTION OUTLINES
  - HISTORIC LANDSCAPE CHARACTER AREA
  - DINORWIG LANDSCAPE OF OUTSTANDING HISTORIC INTEREST

A	16/07/2018	ENVIRONMENTAL STATEMENT	JF	MG	SA
Rev	Date	Description	GIS	Chk	App
nationalgrid					
Scheme: NORTH WALES CONNECTION PROJECT					
Document Number: 5.10.1.7					
Document Title: FIGURE 10.7 DINORWIG LANDSCAPE OF OUTSTANDING HISTORIC INTEREST SECTION F					
Creator: JF	Date: 16/07/2018	Checker: MG	Date: 16/07/2018	Approver: SA	Date: 16/07/2018
Document Type: FIGURE	Scale: 1:20,000	Format: A3	Sheets: 1 of 1	Rev: A	

Contains OS data © Crown copyright and database right 2018.  
Background Mapping Information has been reproduced from the Ordnance Survey map by permission of Ordnance Survey on behalf of The controller of Her Majesty's Stationery Office. © Crown Copyright Ordnance Survey, National Grid Electricity - 100024241, National Grid Gas -100024886.  
Designated Historic Asset GIS Data, The Welsh Historic Environment Service (Cadw), 2018, licensed under the Open Government Licence.